

#ItsYourOutdoors



swlakestrust

# South West Lakes Trust

IMPACTS REPORT 2024/25





## Contents

- 3-4** Welcome
- 5-7** Our Strategy
- 8-9** Our Impact - Public Access
- 10-15** Our Impact - Conservation & Education
- 16-17** Our Impact - Recreation
- 18** Finances & Future Plans
- 19** Thank You

*We are extremely grateful to our visitors, supporters, Friends and staff who have shared photographs with us that are used in this report. You are too many to mention individually but you are all hugely appreciated!*





## Chairman's welcome

Welcome to our Impacts Report for the year ended 31 January 2025. As we reflect on the past year, my fellow trustees and I are filled with pride at the continued achievements of South West Lakes Trust and Wheal Martyn Trust (our wholly owned subsidiary charity).

Our commitment to environmental stewardship has yielded impressive results, with over 2,500 hectares of land in active management, complemented by the planting of 6,144 trees across the region. Through initiatives such as the Dartmoor Green Recovery and our partnerships with local tenants and conservationists, we have fostered an environment where biodiversity can flourish.

The dedication of our Volunteer Site Guardians has been a cornerstone of our conservation efforts. Their tremendous 1,459 hours of service at various sites exemplifies the power of community engagement in tackling invasive species and enhancing biosecurity.

**Together, we can continue to  
make a meaningful impact on  
our environment and in the  
lives of those we serve**

Our Sites of Special Scientific Interest now benefit from updated management plans and regular monitoring, bolstered by collaborations with local wildlife specialists and Natural England. These efforts ensure that we not only protect our natural heritage but also promote its resilience for future generations.

As we look forward, I am excited about the opportunities ahead. With your continued support, we will strive to further our reach, enhance our environmental initiatives, and inspire even more people to experience the beauty and serenity of our outdoor spaces.

Thank you to our volunteers, Friends, stakeholders, employees and my fellow trustees for your ongoing commitment to our vision. Together, we can continue to make a meaningful impact on our environment and in the lives of those we serve.

**John Lee, Chairman**



# Chief Executive's Introduction

This report illustrates the significant strides we have made in enriching the communities we serve, as well as enhancing our natural landscapes.

Our mission to inspire and engage a diverse audience in outdoor activities continues. The introduction of accessible initiatives, such as the Roadford Tramper hire and the expansion of watersports at Stithians Lake, has opened new doors for individuals of all abilities. Our Time2Move programme has provided essential support to families, fostering connections and experiences that many may have otherwise missed.

Notably, our 4,940 volunteer days underline the vital role of community participation in both environmental and social wellbeing. Through

volunteering, individuals gain confidence, learn new skills, and strengthen their connections with one another and the natural world.

As we further our commitment to sustainable fishing practices and broaden our offerings, including successful events like the South West Fly Fair, we encourage anglers of all ages to engage with the joys of fishing while also promoting responsible practices.

Additionally, our subsidiary charity Wheal Martyn Clay Works remained a vibrant hub for cultural experiences, engaging thousands of visitors with a varied range of activities. We have expanded our community engagement programmes, supported by funding from Arts Council

England, and formed partnership with local schools to empower young people and spark their curiosity about our shared cultural heritage.

I am very proud of everything we have achieved across the region, making a real difference for people and the environment. I too would like to thank all our supporters, volunteers, Friends, donors, partners and visitors for your continued support for our charity.

**James Platts, Chief Executive**





# VISION: Healthy lakes, landscapes, and lives

“We would like to see our work deliver healthy lakes and landscapes enabling people to live healthy lives”

**Our main activities are divided into three key areas:**



## **PUBLIC ACCESS**

Enabling more people of all backgrounds and abilities to access the countryside, lakes and forests at over 40 locations covering around 5,000 hectares of land and water in Dorset, Devon, Cornwall and West Somerset.



## **CONSERVATION & EDUCATION**

Safeguarding and enhancing the built and natural environment and increasing the knowledge of our visitors and local communities.



## **RECREATION**

Offering more opportunities for safe participation in a variety of outdoor activities for all abilities, learning new skills and building confidence.





# Values

## INCLUSIVE

We respect others and want to help everyone to enjoy the outdoors.

## TRUSTWORTHY

We will keep our word, we are credible, honest and fair.

## COLLABORATIVE

We work together in our teams, communities and partnerships.

## RESPONSIBLE

We act to benefit society and are accountable for our actions.

## AMBITIOUS

We are determined to do more for people and the planet.

## Impacts we aim to achieve by 2030

### FOR THE ENVIRONMENT:

Our managed landscapes will be abundant, diverse, and connected.

### FOR PEOPLE:

Lives will be enhanced from experiencing the outdoors.







## Outcomes

### Our managed landscapes will be abundant, diverse, and connected

- The biodiversity value of our places is enhanced and better connected.
- We strive to be carbon neutral in our activities and processes.

### Lives will be enhanced from experiencing the outdoors

- A more diverse range of people and more young people are inspired by and engaged with our places and experiences.
- The health and wellbeing of more people is improved.



## Our key activities:

### Public Access

Enabling more people of all backgrounds and abilities to access the countryside, lakes and forests at over 40 locations covering around 5,000 hectares of land and water in Dorset, Devon, Cornwall and West Somerset.

### Conservation & Education

Safeguarding and enhancing the built and natural environment and increasing the knowledge of our visitors and local communities.

### Recreation

Offering more opportunities for safe participation in a variety of outdoor activities for all abilities, learning new skills and building confidence.

# Lives enhanced from the outdoors

More people inspired by and engaged with our green and blue spaces

50

50 lakes, outdoor and historic spaces for the public to explore and enjoy

1,453

We reached 1,453 Friends (Friends of South West Lakes Trust scheme)

2.13m

2.13 million visitors to the lakes

145

145km of paths to explore

55

55km paths cleared and maintained





## Our key activities:

### Public Access

Enabling more people of all backgrounds and abilities to access the countryside, lakes and forests at over 40 locations covering around 5,000 hectares of land and water in Dorset, Devon, Cornwall and West Somerset.

### Conservation & Education

Safeguarding and enhancing the built and natural environment and increasing the knowledge of our visitors and local communities.

### Recreation

Offering more opportunities for safe participation in a variety of outdoor activities for all abilities, learning new skills and building confidence.



## Walk this way

We continue to maintain our estate of over 145km (90 miles) of paths, both public and permissive. Our Ranger team strive to provide safe, accessible and open paths, so that all can enjoy and have access to the outdoors. Many hours have been spent lifting trees, cutting vegetation and repairing path surfaces, with the following results:

- 12km of paths were cleared and maintained in West Cornwall, including 5km of raising tree branch clearance
- 18km of paths were cleared at Roadford and Tamar
- 4km of paths were cleared and 20 metres of boardwalks repaired at Wimbleball
- 21km of paths were cleared and widened across Dartmoor

## Roadford Tramper hire

In August 2024, we moved our Trampler from Siblyback Lake, where it was difficult to hire and not widely used, to Roadford Lake where it is now based at Roadford Lake Cafe through a partnership scheme with Living Options (Countryside Mobility). The Trampler is an easy to use mobility scooter, designed for the roughest terrain and for hire at a minimal cost.

Countryside Mobility is a recognised provider in accessibility and has a strong presence throughout the South West with similar organisations such as Forestry England and National Trust.

The Trampler enables greater access for those less able, allowing them to join family and friends on longer routes over off-road and rugged terrain, enabling more people to see and engage with all the site has to offer.





## Our key activities:

### Public Access

Enabling more people of all backgrounds and abilities to access the countryside, lakes and forests at over 40 locations covering around 5,000 hectares of land and water in Dorset, Devon, Cornwall and West Somerset.

### Conservation & Education

Safeguarding and enhancing the built and natural environment and increasing the knowledge of our visitors and local communities.

### Recreation

Offering more opportunities for safe participation in a variety of outdoor activities for all abilities, learning new skills and building confidence.

# Our environmental work

The biodiversity value of our places is enhanced and better connected

## Invasive non-native species and biosecurity

We continue to work in partnership with South West Water to help protect our lakes from the impacts of invasive non-native species – animals, plants, fungi and pathogens that have been introduced to areas outside their natural range.

With the help of our volunteer Site Guardians at 32 sites, we have maintained biosecurity facilities at our lakes, undertaken practical control tasks, carried out monitoring and research and attended talks and events to gain knowledge and skills.

Our Site Guardians also supported 17 events and activities including workshops and competitions. 124 anglers engaged with our Rangers, Invasive Species Officer and volunteers at competitions and 982 visitors interacted with the team at 55 events across the region to raise awareness of the impacts of invasive species and the importance of biosecurity.

124

A total of 124 anglers engaged with our Rangers, Invasive Species Officer and volunteers at competitions, raising awareness of the impacts of invasive species and the importance of biosecurity

1,459

Our volunteer Site Guardians gave 1,459 hours of their time to support our Invasive Species Officer at 32 sites

## Sculptures raise awareness

We have installed 12 “features” across the region to raise awareness of invasive non-native species. The sculptures were created by local businesses or our volunteers and installed at 12 different sites. We worked with South West Water, who funded the project, to select invasive species relevant to those sites. For example, Longham Lakes in Dorset is now home to a yellow-legged hornet (better known as the Asian hornet)

because it is our most easterly site and Asian hornet sightings are more common at ports in the South East. A signal crayfish sculpture is on display at Burrator where there is a significant population of this species.

The public are our first point of call for helping to prevent the spread of invasive species. These features allow us to promote awareness in a more natural and creative format.





## Our key activities:

### Public Access

Enabling more people of all backgrounds and abilities to access the countryside, lakes and forests at over 40 locations covering around 5,000 hectares of land and water in Dorset, Devon, Cornwall and West Somerset.

### Conservation & Education

Safeguarding and enhancing the built and natural environment and increasing the knowledge of our visitors and local communities.

### Recreation

Offering more opportunities for safe participation in a variety of outdoor activities for all abilities, learning new skills and building confidence.

## Sites of Special Scientific Interest

We have been working across eight Sites of Special Scientific Interest (SSSIs), including Burrator and Lopwell Dam in Devon and Crowdy in Cornwall. All eight SSSIs now have new management plans in place.

Regular monitoring and management is now taking place across our SSSIs with volunteers taking an active role. We continue to work alongside and engage with local wildlife specialists and landowners to ensure the

work we do has impacts beyond the extent of the land we manage. Contact with Natural England has also been instrumental in us gaining expert advice and support.



## Heavy horses lend a helping hand at Burrator

In June 2024, we joined forces with Dartmoor Horse Loggers to carry out some river enhancement work on the River Meavy, near Burrator.

Specialists in geomorphology, biodiversity and fisheries from the Environment Agency advised us on the best action to take to improve the river habitat. The use of whole trees to pack into the river was chosen, because the brash and trunks from trees would raise the water level and help to trap sediment, raising the river bed, whilst allowing fish passage through branches.

With the help of volunteers from the Environment Agency, Babcock, Arcadis and our regular volunteers, the horses pulled woody debris such as trees and branches downstream for the volunteers to pack into the river.

This will have lots of benefits for wildlife, including creating better wetland habitats, and using horses rather than machinery such as diggers or quad bikes is less damaging to the uneven and boggy ground.

Over time we will be able to observe the changes that are made by increased upland wetted habitats, and hopefully we will create more patches of boggy habitat with space for more invertebrates, birds and a greater diversity of plants.

The work was funded by the Environment Agency's Water Environment Improvement Fund and was part of the wider South West Water-funded Dartmoor Green Recovery project.





## Our key activities:

### Public Access

Enabling more people of all backgrounds and abilities to access the countryside, lakes and forests at over 40 locations covering around 5,000 hectares of land and water in Dorset, Devon, Cornwall and West Somerset.

### Conservation & Education

Safeguarding and enhancing the built and natural environment and increasing the knowledge of our visitors and local communities.

### Recreation

Offering more opportunities for safe participation in a variety of outdoor activities for all abilities, learning new skills and building confidence.

# Our environmental work

## We strive to be carbon neutral in our activities and processes

We continued our "Watt-son" energy-saving campaign which gave everyday simple tips to our employees on how to save energy. As a result, employees' appreciation of what can be achieved by everyone taking part in small changes has increased.

We continued the move from petrol driven to battery driven land management tools such as chainsaws and trimmers and will continue this process at times of renewal when technology supports a change.

## Tree planting and forestry

With the help of our volunteers we have planted 6,144 new trees across the region, creating new connective habitat and food sources for wildlife. Training was provided on planting techniques, increasing volunteer skills, and species choices were explained along with information on the wildlife each supports. Species selection was informed with help from the results of volunteer bird surveys and advice sought for woodland management from expert volunteers and suppliers.



**31** 31 locations, 2,522 hectares and 11,991 metres of hedges and running water are now in active management

## Dartmoor Green Recovery project

Delivery of biodiversity enhancement implementations in the Burrator catchment, working with commoners and tenant graziers, has been very successful.

GPS collars on cattle are now helping to manage habitats using NoFence technology. Together with botanical survey results we have combined data to inform grazing regimes, which will benefit habitats as well as livestock.

Volunteers working with our team have continued to create new and enhance existing habitats with leaky dam construction being particularly popular. The positive impacts of these structures are rapidly seen, such as new ponds containing frogspawn.

A total of 1,270 trees have been planted at Burrator assisted by our volunteer teams with 1,588 hectares of land in the catchment now in active management. A new volunteer group has been set up at Venford which we hope to build on as we have at other sites.





## Our key activities:

### Public Access

Enabling more people of all backgrounds and abilities to access the countryside, lakes and forests at over 40 locations covering around 5,000 hectares of land and water in Dorset, Devon, Cornwall and West Somerset.

### Conservation & Education

Safeguarding and enhancing the built and natural environment and increasing the knowledge of our visitors and local communities.

### Recreation

Offering more opportunities for safe participation in a variety of outdoor activities for all abilities, learning new skills and building confidence.

**25,818**

25,818 people visited  
Wheal Martyn in the year



**7,589**

7,589 people from our  
communities engaged  
through events, family  
holiday workshops, memory  
café, arts for health group  
and creative workshops

**2,000**

Over 2,000  
educational  
visits



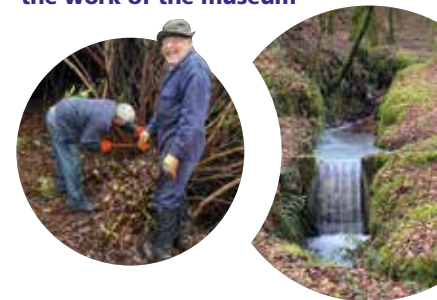
**11**

11 home  
learners  
achieved an  
Arts Award

**5,200**

Over 5,200 children and  
young people were engaged

Volunteers enabled us to achieve so much more towards preserving the museum collection and giving our audiences memorable experiences by contributing 1,001 days freely to the work of the museum



# Wheal Martyn Clay Works

Engaging communities with Cornwall's china clay heritage

Visitors were inspired by exhibitions  
hosted in the new gallery



Funding from Arts Council England helped us launch monthly music evenings featuring Cornish talent, regular Cornish speaking sessions and a range of new creative workshops including ceramic painting and clay sculpting



Our three-year Reading Wheal Martyn for the Future project, funded by the National Lottery Heritage Fund, commenced





## Our key activities:

### Public Access

Enabling more people of all backgrounds and abilities to access the countryside, lakes and forests at over 40 locations covering around 5,000 hectares of land and water in Dorset, Devon, Cornwall and West Somerset.

### Conservation & Education

Safeguarding and enhancing the built and natural environment and increasing the knowledge of our visitors and local communities.

### Recreation

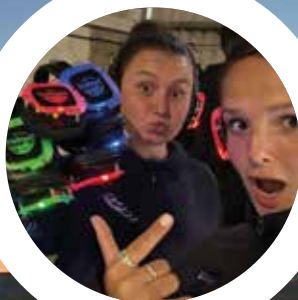
Offering more opportunities for safe participation in a variety of outdoor activities for all abilities, learning new skills and building confidence.

# National Citizen Service (NCS)

We were proud to host the final NCS (National Citizen Service) programme at Roadford and Siblyback, helping 1,063 young people develop confidence, teamwork and leadership skills through outdoor challenges.

The week-long summer residential programme involved:

- Camping away from home
- Adventure activities including kayaking, team building and paddleboarding
- Developing life skills



“Very fun and new experience, got to do fun water based activities I wouldn't normally do, met new people who were super welcoming, the coaches of the group I was in were extremely nice and made it an enjoyable week away from home, would recommend.”

Roadford Lake, July 2024

“I really enjoyed NCS. Working as part of a team gave me a real boost. I grew in confidence especially when I pushed myself to tackle the high ropes as I am scared of heights and I can't swim. But I did everything that was asked and met some amazing friends.”

Roadford Lake, July 2024

“Well planned, excellent activities, facilities and food. Incredible learning opportunity, both on the water and dry side. Incredible memories.”

Siblyback Lake, August 2024



“I had the most amazing time – loved every activity and came away with loads of new friends. It taught me some new skills on top of all of that!”

Siblyback Lake, August 2024

# 1,063

1,063 young people took part in our NCS activity programmes



## Our key activities:

### Public Access

Enabling more people of all backgrounds and abilities to access the countryside, lakes and forests at over 40 locations covering around 5,000 hectares of land and water in Dorset, Devon, Cornwall and West Somerset.

### Conservation & Education

Safeguarding and enhancing the built and natural environment and increasing the knowledge of our visitors and local communities.

### Recreation

Offering more opportunities for safe participation in a variety of outdoor activities for all abilities, learning new skills and building confidence.

## Our valued volunteers

Volunteering benefits physical and mental health, boosts confidence, teaches new skills and provides a sense of community.

Alongside our regular site-based groups we were able to welcome more volunteers; with work experience students joining us at Roadford, working with the Dartmoor Junior Youth Rangers, continuing to work with Babcock Devonport staff on various conservation and access projects at Burrator and working with Cornwall Wildlife Trust with Upstream Thinking volunteer work parties.

Our committed volunteers give their time freely to support our work across the region including:

- **Wildlife surveys and monitoring**
- **Tree planting and woodland management**
- **Litter picking**
- **Recreational support**
- **Fishery swim repairs**
- **Invasive species monitoring and biosecurity awareness**
- **Environmental research and desktop surveys**
- **Welcoming people to our café at Roadford Lake**



Removing beech and conifer trees from an area of potential temperate rainforest at Burrator



Volunteers bird watching at Longham



Reed clearing at Longham Lakes



Volunteer celebration at Roadford, January 2025

# 4,940

Volunteers gave 4,940 days of their time to benefit people and the environment

## Helping wildlife thrive

Thanks to nature enthusiast and volunteer Liz Crow, two lakes in North Devon are now better managed for dragonflies and damselflies.

Liz discovered that Gammaton Reservoir, leased to an angling club, is home to a colony of red-eyed damselfly. More species were found at Jennetts, also a fishery, including white-legged damselfly and scarce chasers.

She has worked closely with South West Water and anglers to ensure Gammaton and Jennetts are managed more sympathetically for dragonflies and damselflies, for example by limiting the removal of aquatic and bankside vegetation where they lay their eggs.



## Upstream Thinking

Since 2015, we have been working alongside Cornwall Wildlife Trust on an exciting conservation project at College, Argal and Stithians reservoirs near Penryn and Redruth. The project is part of a South West Water funded catchment management initiative, Upstream Thinking.

As part of the project, a group of volunteers meets every Thursday to work on a variety of tasks including scrub clearance, bracken management, invasive species removal and tree planting.



Clearing storm damage at Burrator in December 2024



Longham volunteers



Roadford volunteers making a bird hide from willow



Volunteers at Avon Dam



## Our key activities:

### Public Access

Enabling more people of all backgrounds and abilities to access the countryside, lakes and forests at over 40 locations covering around 5,000 hectares of land and water in Dorset, Devon, Cornwall and West Somerset.

### Conservation & Education

Safeguarding and enhancing the built and natural environment and increasing the knowledge of our visitors and local communities.

### Recreation

Offering more opportunities for safe participation in a variety of outdoor activities for all abilities, learning new skills and building confidence.

# Outdoor activities for all

The health and wellbeing of more people is improved

5

Five Activity Centres providing watersports, climbing, archery and camping

## Active young people

This year has been a successful one for getting young people outdoors, active and engaged with nature at our lakes. By expanding recreational activities across our sites, for example offering eFoil at Stithians, we've provided more opportunities than ever for young adventurers to explore the water in new and exciting ways.

Our strong partnerships with schools, Scout groups, and the Army Cadet Force have played a vital role in encouraging outdoor learning, resilience and adventure. This year, we also launched new instructor training programmes at Roadford, supporting young people as they train for careers in watersports and gain valuable qualifications.

As we look ahead, we remain committed to inspiring the next generation to embrace adventure while protecting the natural beauty of our lakes for years to come.

## Roadford Lake Café and Venue

In 2024, Roadford Lake Café and Venue continued to be a hub of great food, community spirit and charitable activities, hosting a variety of events that brought people together for meaningful causes:

- **The South West Fly Fair** welcomed anglers of all levels but it wasn't just about fishing — it was about sharing a passion for the outdoors and bringing people together ahead of the season.
- **Cake for the Lake:** The café baked up a host of delicious treats, with proceeds going towards conservation projects at Roadford Lake.
- **National Citizen Service (NCS) programme:** During the summer, Roadford Lake Café fed several week-long NCS residential programmes.

35

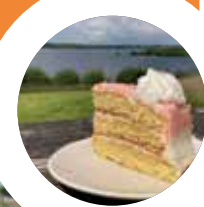
Trout and coarse angling available at 35 fisheries



## Time2Move

Following the success of 2023, and with continued support from the Department for Education's Holiday Activities and Food Programme funding, we were able to offer 73 fully funded places on our "Time2Move" programme at Stithians Lake during the summer holidays. This initiative was designed to support families who often face barriers to accessing extracurricular activities and are at higher risk of experiencing social isolation or "unhealthy holidays".

The programme provided a dynamic mix of activities, including a nutritious breakfast and lunch, icebreaker sessions, and exciting on-water experiences such as windsurfing, paddling and sailing. New friendships were fostered, creating lasting memories, and both physical activity and social interaction outside the classroom were encouraged.





## Our key activities:

### Public Access

Enabling more people of all backgrounds and abilities to access the countryside, lakes and forests at over 40 locations covering around 5,000 hectares of land and water in Dorset, Devon, Cornwall and West Somerset.

### Conservation & Education

Safeguarding and enhancing the built and natural environment and increasing the knowledge of our visitors and local communities.

### Recreation

Offering more opportunities for safe participation in a variety of outdoor activities for all abilities, learning new skills and building confidence.

## Angling

We continued to look at growing junior participation and increasing value for anglers. With this in mind, a new ticket was introduced allowing under 18s to fish for free alongside a paying adult. Taster days for game fishing were held across five of our venues, with the help of our volunteer instructors, and participation levels were good throughout.

There was a focus on invasive species awareness and control, with the installation of new dip tanks across our game and coarse venues. Some great collaborative work has been undertaken with the environment team and South West Water.

A successful rudd removal exercise was conducted at Stithians with these fish transferred to Trenchford. Alongside this, the carp removals continued from Roadford with several sites benefitting from a fresh stocking to help boost catches.

A new Brown Trout Masters competition was held across three venues, Colliford, Fernworthy and Roadford. This was very well received and will hopefully become a firm fixture and a favourite amongst our anglers. Coarse fishing had the continued success of the Mainline Baits Carp Open Pairs competition, with events held over three separate weekends. The Open now forms an important part of the carp fishing calendar.

# 125

125 people took part in our trout fishing taster days



# 149,000

149,000 active visits were made to the lakes, ranging from angling to wind winging

## Lights, camera, action!

Over 2.5 million viewers saw our 30-second advert, which was broadcast on ITV1 and ITX in July 2024 and on YouTube from July to the end of September 2024. It starred staff and volunteers showcasing everything the lakes have to offer, from accessible walking to wing foiling.

## Expansion of wing sports

The introduction and expansion of wing foiling, wing surfing, and eFoiling at Stithians Lake has opened up watersports to more people than ever before. These exciting new activities offer an easier way to get started, making them perfect for beginners and those who may have found traditional wind sports too demanding. eFoiling is especially accessible, as it doesn't rely on wind, while wing foiling and wing surfing provide a fun and accessible alternative to windsurfing and kitesurfing.

This growing sport and its community are making Stithians an even more welcoming and exciting place, increasing participation and inspiring more people to discover the joy of being out on the water.



# 3,950

A total of 3,950 young people from local schools, Scout groups, youth clubs and Army Cadet Forces took part in subsidised activity days at Stithians, Wimbleball and Roadford



## Summary of Group Results - Year Ended 31 January 2025

|                                 | Unrestricted Funds £ | Restricted Fund<br>Wheal Martyn £ | Restricted Funds £ | Total Funds 2025 £ | Total Funds 2024 £ |
|---------------------------------|----------------------|-----------------------------------|--------------------|--------------------|--------------------|
| Total incoming resources        | <b>4,341,210</b>     | <b>659,908</b>                    | <b>494,296</b>     | <b>5,495,414</b>   | <b>5,434,317</b>   |
| Total outgoing resources        | <b>4,492,356</b>     | <b>611,188</b>                    | <b>707,042</b>     | <b>5,810,586</b>   | <b>5,637,854</b>   |
| Net incoming/outgoing resources | <b>-151,146</b>      | <b>48,720</b>                     | <b>-212,746</b>    | <b>-315,172</b>    | <b>-203,537</b>    |
| Net gain on investment          | -                    | -                                 | -                  | -                  | <b>10,000</b>      |
| Net income/expenditure          | <b>-151,146</b>      | <b>48,720</b>                     | <b>-212,746</b>    | <b>-315,172</b>    | <b>-193,537</b>    |
| Transfer between funds          | <b>73,838</b>        | -                                 | <b>-73,838</b>     | -                  | -                  |
| Net Movement in Funds           | <b>-77,308</b>       | <b>48,720</b>                     | <b>-286,584</b>    | <b>-315,172</b>    | <b>-193,537</b>    |
| Fund balances brought forward   | <b>1,763,424</b>     | <b>1,404,898</b>                  | <b>1,339,562</b>   | <b>4,507,884</b>   | <b>4,701,421</b>   |
| Fund balances carried forward   | <b>1,686,116</b>     | <b>1,453,618</b>                  | <b>1,052,978</b>   | <b>4,192,712</b>   | <b>4,507,884</b>   |

## South West Lakes Trust 2024/25

### INCOMING RESOURCES

|                              |                   |
|------------------------------|-------------------|
| Charitable Activities        | <b>£2,830,123</b> |
| Commercial Trading           | <b>£2,430,923</b> |
| Investment Income            | <b>£88,807</b>    |
| Donations                    | <b>£74,849</b>    |
| Negative Goodwill write back | <b>£47,249</b>    |
| Other Trading                | <b>£23,463</b>    |
|                              | <b>£5,495,414</b> |

### OUTGOING RESOURCES

|                          |                   |
|--------------------------|-------------------|
| Charitable Activities    | <b>£3,519,893</b> |
| Commercial/Other Trading | <b>£2,087,009</b> |
| Fundraising              | <b>£203,684</b>   |
|                          | <b>£5,810,586</b> |

For information on our financial statements for the year ending 31 January 2025, please see our full Annual Report on the Charity Commission website.

## Plans for the future

We are looking forward to delivering the following plans in the coming years.

### Public access

- Use our 25th birthday to encourage more people to engage with green and blue spaces.
- Continue to work with colleagues in the Bristol Water area and if contracted spread our work for public access, conservation, education and recreation at the reservoirs to the south of Bristol.

### Conservation and education

- Continue installing biosecurity measures and raise awareness with visitors.
- Work to improve habitats on Dartmoor.
- Continue to manage Sites of Special Scientific Interest and County Wildlife Sites in our care.
- Continue our journey towards Net Zero by switching our equipment and vehicles over to battery power on renewal and when the technology is available.
- Agree a new Development plan setting out our project aims for the next few years.

### Recreation

- Expand the range of activities on offer at Wimbleball Lake.
- Work with angling clubs to provide angling experiences.





# A special thank you...

We would like to say a heartfelt thank you to all our supporters, partners, volunteers and Friends for helping us to achieve so much during this impactful year. We are very grateful to you, and we look forward to continuing to build on our work in the future.

## Partners

- South West Water
- Bournemouth Water
- Dartmoor National Park Authority
- Exmoor National Park Authority
- National Citizen Service Trust



## Funders

- Friends of South West Lakes Trust
- Exmoor National Park Authority
- Angling Trust
- Environment Agency
- Defra
- Somerset Council
- Woodland Trust

## Working with: public access

- Avon and Somerset Police (Rural crime initiatives)
- Countryside Mobility South West
- Dartmoor Futures
- Devon and Cornwall Police (Rural crime initiatives)
- Devon and Somerset Fire and Rescue Service
- Devon County Council
- Golden Tree Productions
- UK and Ireland Lakes Network
- Visitor Safety Group

## Working with: conservation

- Amphibian and Reptile Groups UK
- Animal and Plant Health Agency (APHA)
- Bodmin Moor Commons Council
- British Trust for Ornithology
- Bristol Zoological Society
- Butterfly Conservation
- Camel Catchment Partnership
- Cornwall & Isles of Scilly Local Nature Partnership
- Cornwall & Isles of Scilly Local Nature Recovery Strategy
- Cornwall & Isles of Scilly Federation for Biological Recorders
- Cornwall Area of Outstanding Natural Beauty
- Cornwall Bat Group
- Cornwall Bird Watching and Preservation Society
- Cornwall Butterfly Conservation
- Cornwall Catchment Partnership
- Cornwall Reptile and Amphibian Group
- Cornwall Wildlife Trust
- Dartmoor Preservation Association
- Devon Bat Group
- Devon, Cornwall & IoS Natural Flood Management Group
- Devon Invasive Species Initiative
- Devon Local Nature Partnership
- Devon Reptile and Amphibian Group
- Devon Wildlife Trust
- Dorset Local Nature Partnership
- Duchy of Cornwall
- Environment Agency
- Exeter University
- Forest Research
- Forestry Commission
- Forestry England
- Forest for Cornwall Partnership
- Froglife
- Hampshire and Isle of Wight Wildlife Trust
- Historic England
- Holne Common Association
- Institute of Zoology
- Kernow Curlew
- Moor Trees
- Natural England
- Oxygen Conservation
- Plantlife
- Red Squirrel South West
- RSPB
- Sheepstor Commoners' Association
- Somerset Bat Group
- South West Invasive Species Forum
- Stour Valley Partnership
- Tamar Catchment Partnership
- Tamar Valley National Landscape
- UK Centre for Ecology and Hydrology
- University of Exeter
- Water UK Conservation, Access and Recreation (CAR) Forum
- Water UK Invasive Non-Native Species (INNS) Forum
- Westcountry Rivers Trust
- West Cumbria River Trust
- Woodland Trust
- Yorkshire Wildlife Trust

## Working with: activities

- Active Cornwall
- Adventure Activity Licensing Authority (AALA)
- Angling Trust
- British Canoeing / Paddle UK
- British Float Tube Association
- Calvert Trust Exmoor
- Cornwall Council
- Duchy College
- Falmouth Marine School
- Ingeus
- Parkrun
- Royal Yachting Association
- Somerset Activity and Sports Partnership
- The Scout Association
- Wessex Water

## Community groups and clubs delivering at the lakes

- Boscastle and Crackington Gig Club
- Bideford Sea Cadets
- British Army
- British Model Flying Association
- Bude Pilot Gig Club
- Burrator Fly Fishers Association
- CAST Fly Fishing Club
- Christchurch and District Model Flying Club
- Christchurch Rowing Club
- Clovelly Gig Club
- Cornwall Rowing Association
- Devon Army Cadets
- Dorset Ultimate Canoe Kayak Squad
- Exeter University
- Exmoor Canoe Club
- Greenbank Falmouth Rowing Club
- Kennick Fly Fishers Association
- Lifton Sea Scouts
- Lighthouse Community Centre
- North Devon Radio Sailing Club
- Petroc College and Bideford Canoe Club
- Poole Radio Yacht Club
- Portreath Gig Club
- Porlock Gig Rowing
- Ringwood and District Anglers Association
- Ripple Rebels
- Roadford Lake Sailing Club
- Roadford Rafter
- Roadford Rowing Club
- Siblyback Fly Fishers Association
- South Western Ambulance Service NHS
- South West Fishing for Life
- The Lowen School
- Torridge Fly Fishing Club
- Tor View School
- Trelawney Rowing Club
- Upper Tamar Lake Sailing Club
- West Cornwall Radio Sailing Club
- Wimborne and District Angling Club
- Wimbleball Sailing Club
- Wimbleball Rowing Club
- Yenworthy Lodge





## SOME OF OUR MOST POPULAR LOCATIONS

- |                  |                                    |
|------------------|------------------------------------|
| 1 Stithians Lake | 11 Burrator                        |
| 2 Argal          | 12 Avon Dam                        |
| 3 Porth          | 13 Venford                         |
| 4 Crowdy         | 14 Fernworthy                      |
| 5 Colliford Lake | 15 Tottiford, Trenchford & Kennick |
| 6 Siblyback Lake | 16 Wistlandpound                   |
| 7 Tamar Lakes    | 17 Wimbleball Lake                 |
| 8 Roadford Lake  | 18 Wheal Martyn Clay Works         |
| 9 Meldon         | 19 Longham Lakes                   |
| 10 Lopwell Dam   | 20 Christchurch Harbour            |

See website for full list of lakes



[www.swlakestrust.org.uk](http://www.swlakestrust.org.uk) | 
 [info@swlakestrust.org.uk](mailto:info@swlakestrust.org.uk) | 
 01566 771930  
 South West Lakes Trust, Roadford Lake, Broadwoodwidge, Lifton, Devon PL16 0RL  
 Charity number: 1079966 Registered company number: 03946529